





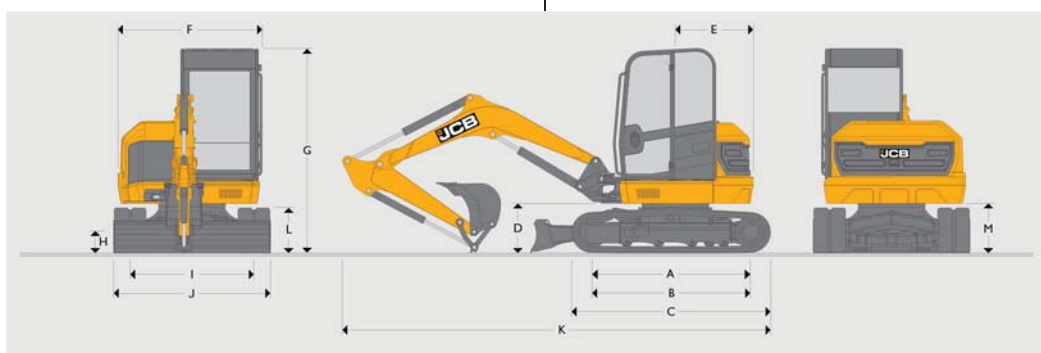
**48 Z**

- 
Profondeur fouille **3.53 m**
- 
Force de cavage **3800 kgf**
- 
Portée maxi **5.85 m**
- 
Poids du matériel **4.80 t**



## CARACTÉRISTIQUES

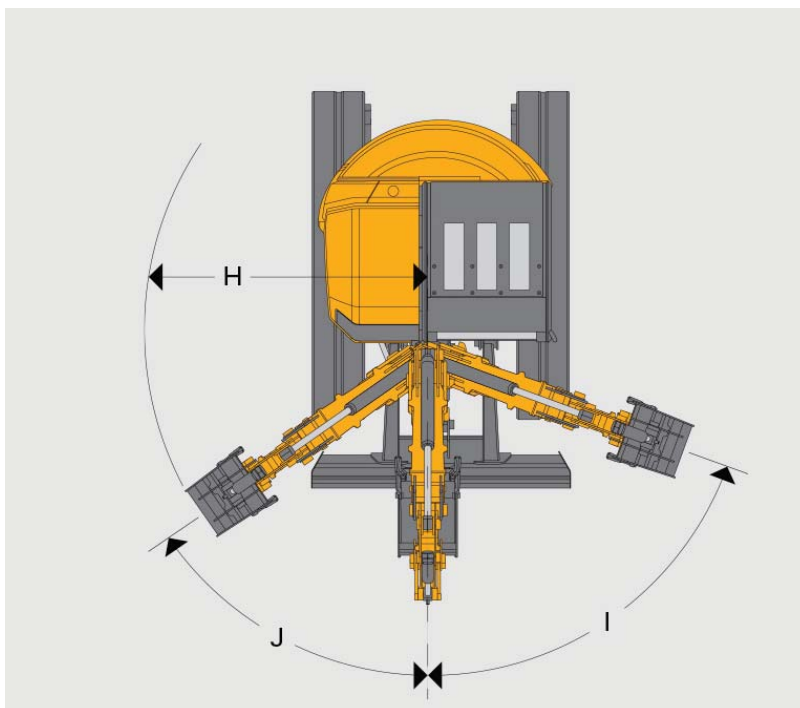
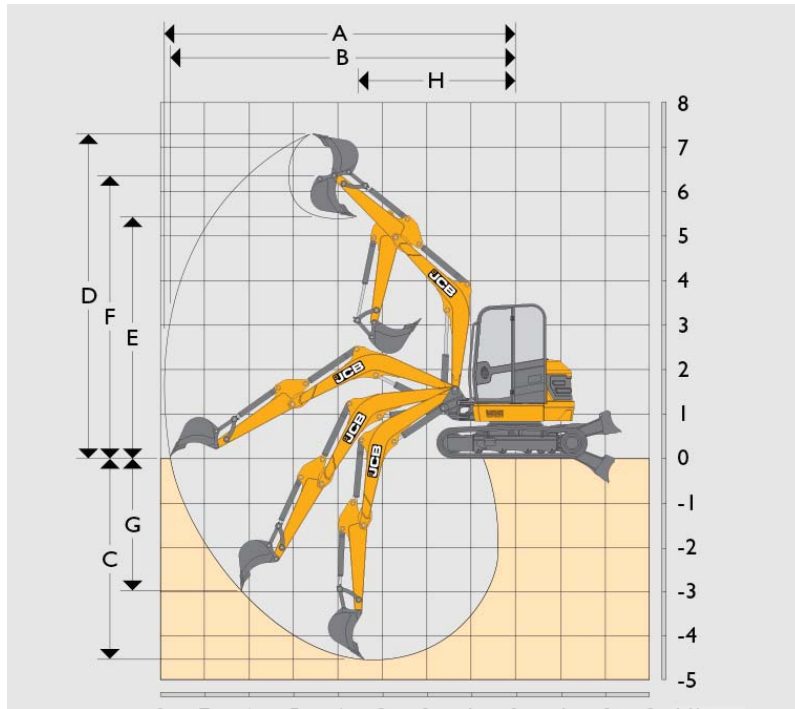
Constructeur	JCB
Modèle	48Z
Moteur	PERKINS 404-D22 ETAPE 3A
Puissance	48 CV
Carburant	GNR
Capacité du réservoir	76 L
Cabine	Oui
Dimensions (L x l x h)	5.35 X 1.95 X 2.55
Type de godet	Retro 450 700 curage 1200
Pente maximum	35°



unité : mm

48 Z

ABAQUES



unité : m

Document non contractuel